

# B1



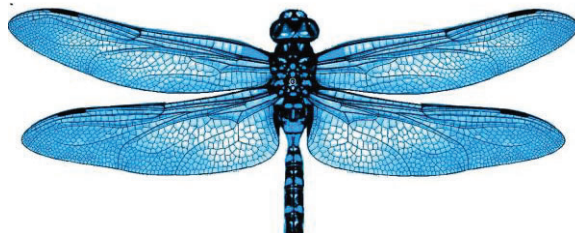
Radio  
Compartment  
Spacer

EDF Mount



Make 2  
Each

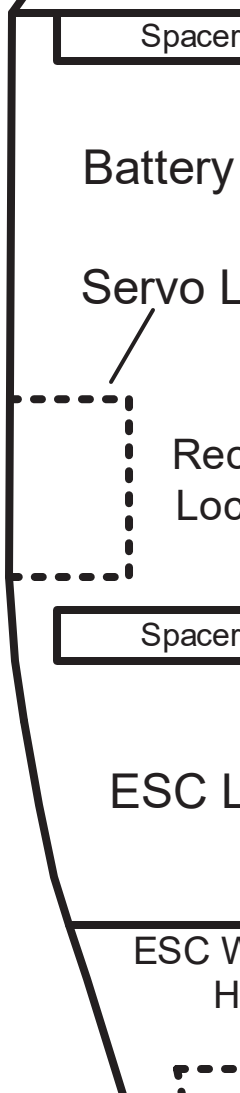
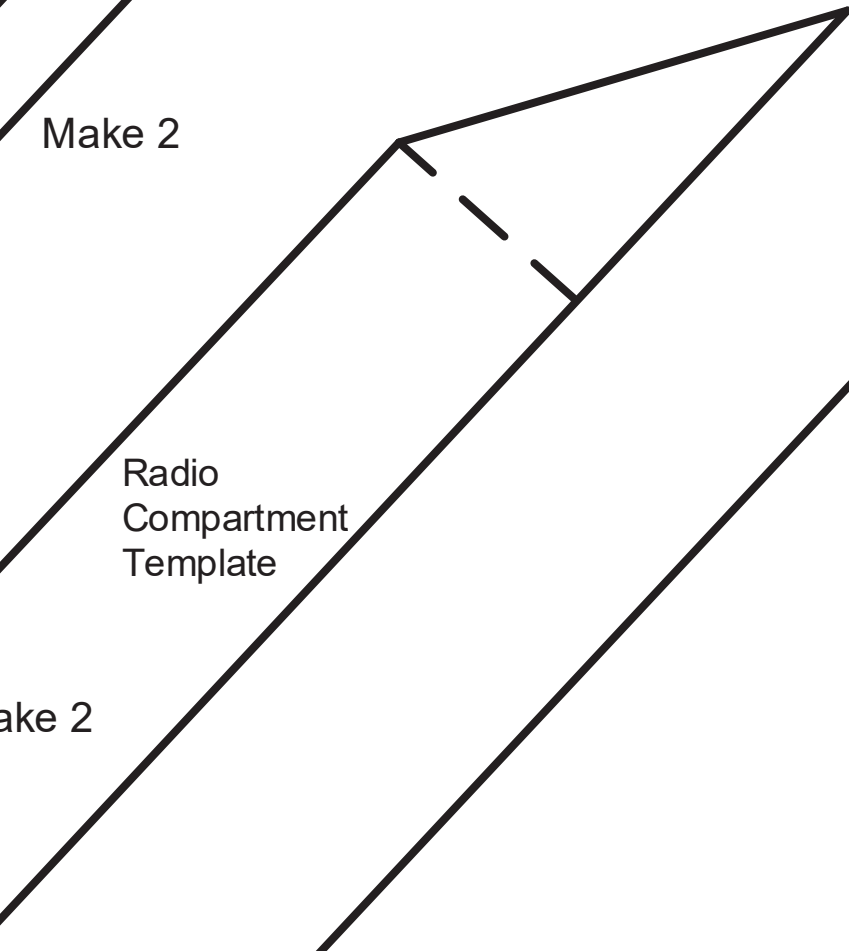
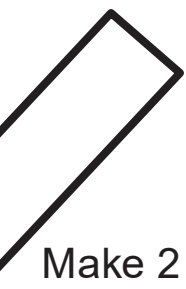
EDF Rail



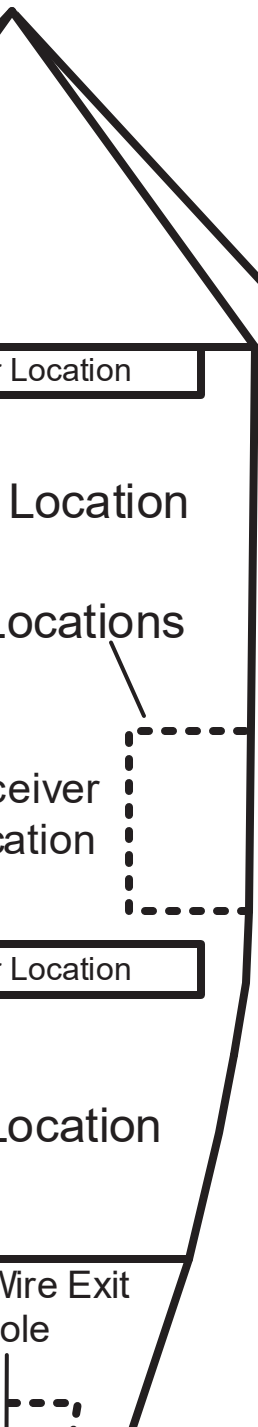
Ma

# Blue Dragonfly

Cent



erline



## Const

- 1) Wing, elevons and ailerons made from similar 6mm foam
- 2) Radio compartment made from Bluecor or similar
- 3) Radio compartment made from 3mm depron foam
- 4) EDF mounts made from aluminum or similar hard material
- 5) Pushrods made from brass or aluminum and .032" "Z" brass
- 6) Spar made from aluminum or similar material is mounted into the fuselage

## **Construction Notes:**

Body and fin made from Bluecor or  
foam board

Wingment sides and spacers made  
of similar 6mm foam board

Wingment top and hatch made from  
foam sheet

Wing rails made from chop sticks  
or balsa wood

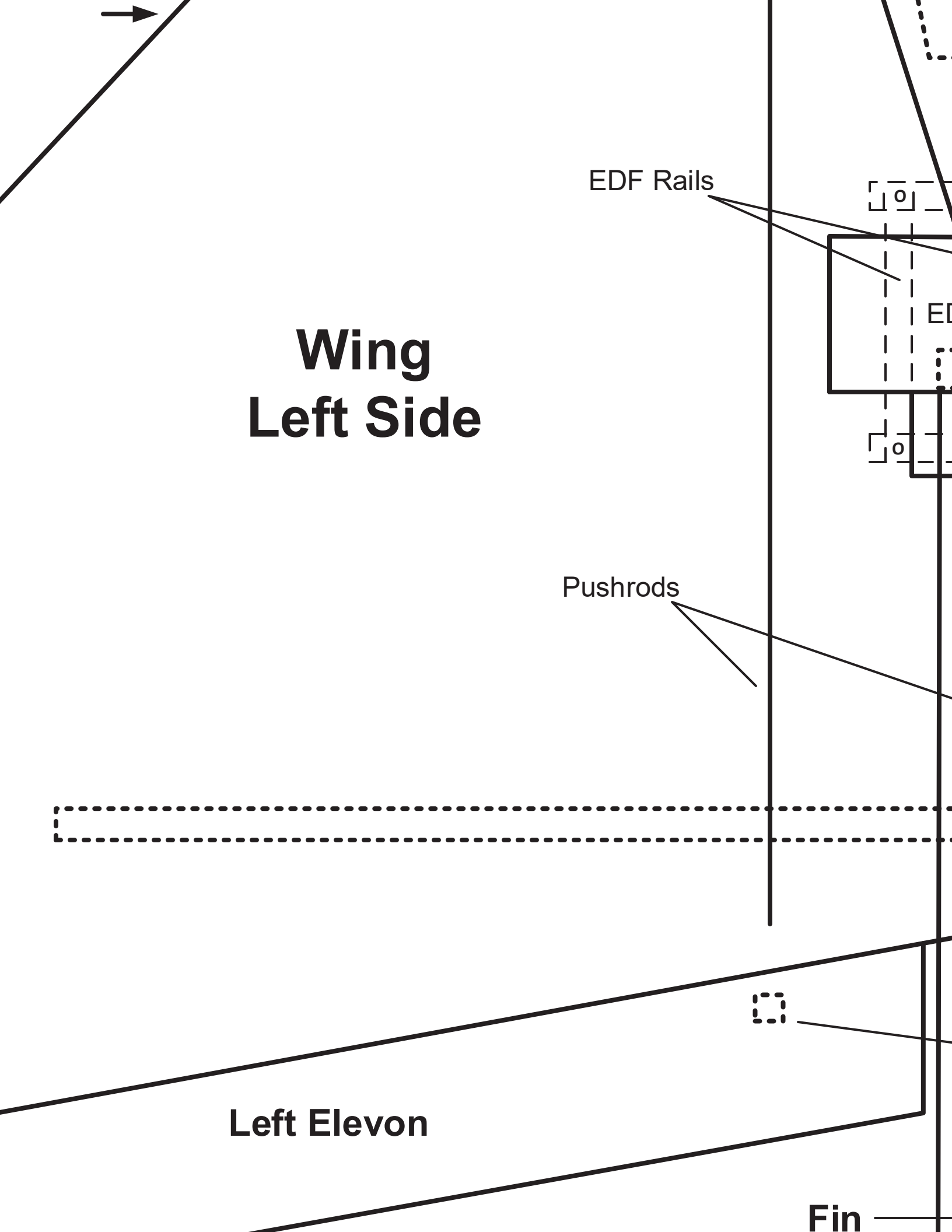
Wing ribs from .060 carbon fiber rods

Wingment music wire ends

Wingment 5mm carbon fiber tube which  
attaches to the underside of wing

Z Bent Wire Ends  
Make 2





# Wing Left Side

EDF Rails

Pushrods

Left Elevon

Fin

← Cen

# Wing Right Side

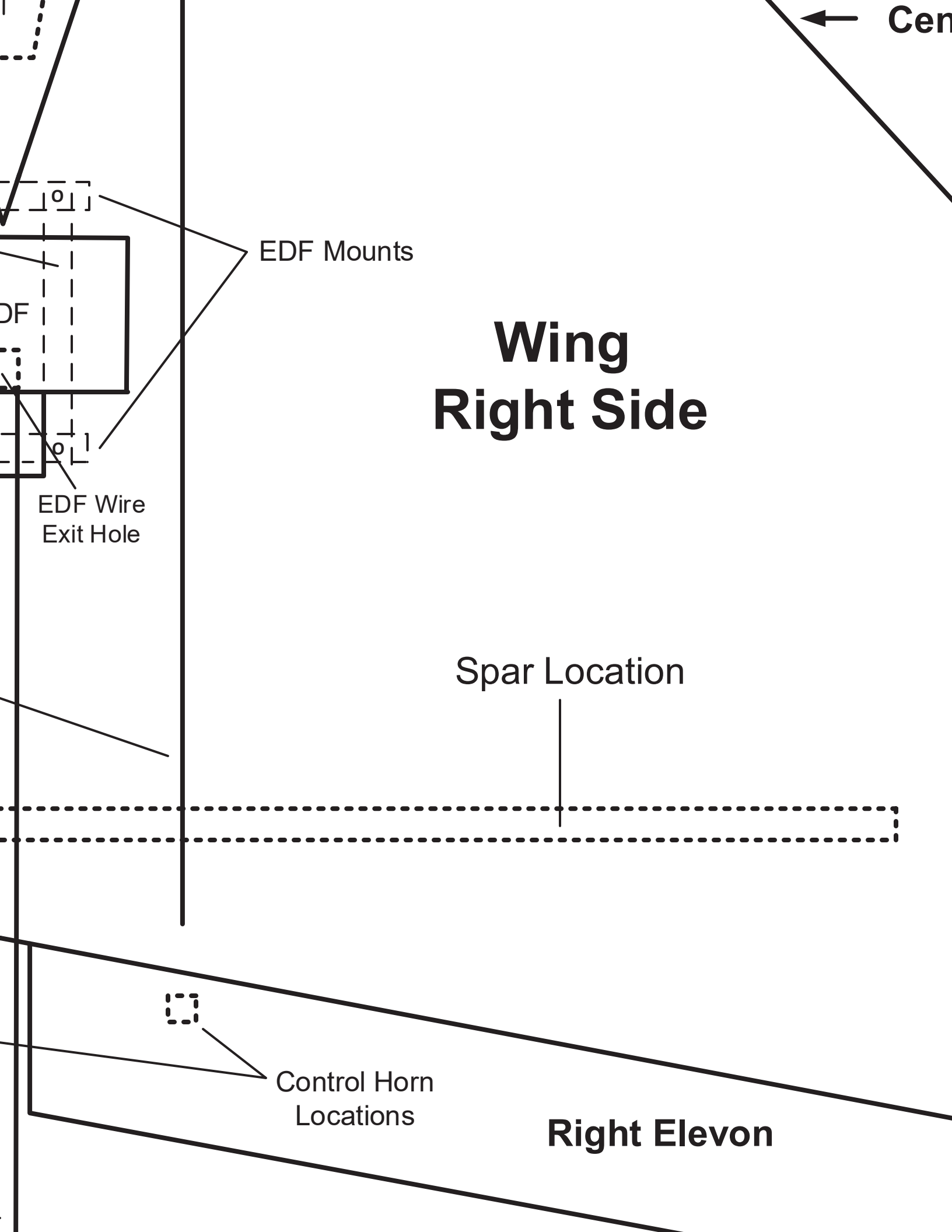
EDF Mounts

EDF Wire  
Exit Hole

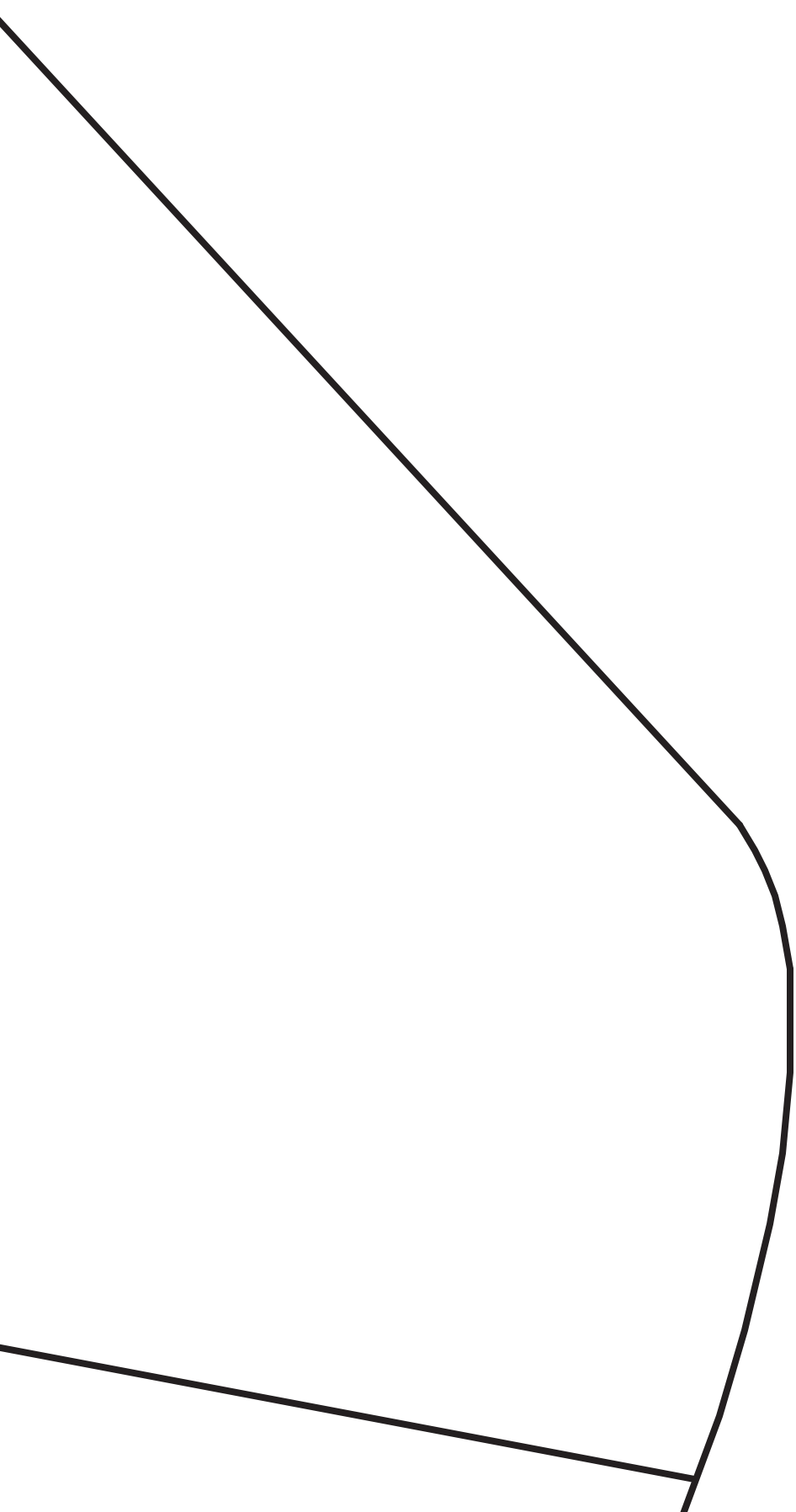
Spar Location

Control Horn  
Locations

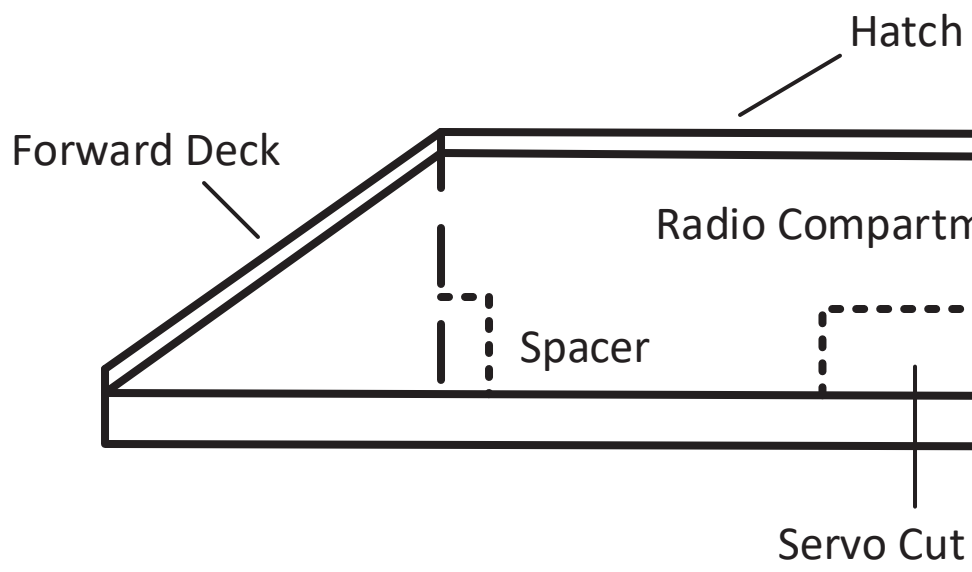
Right Elevon



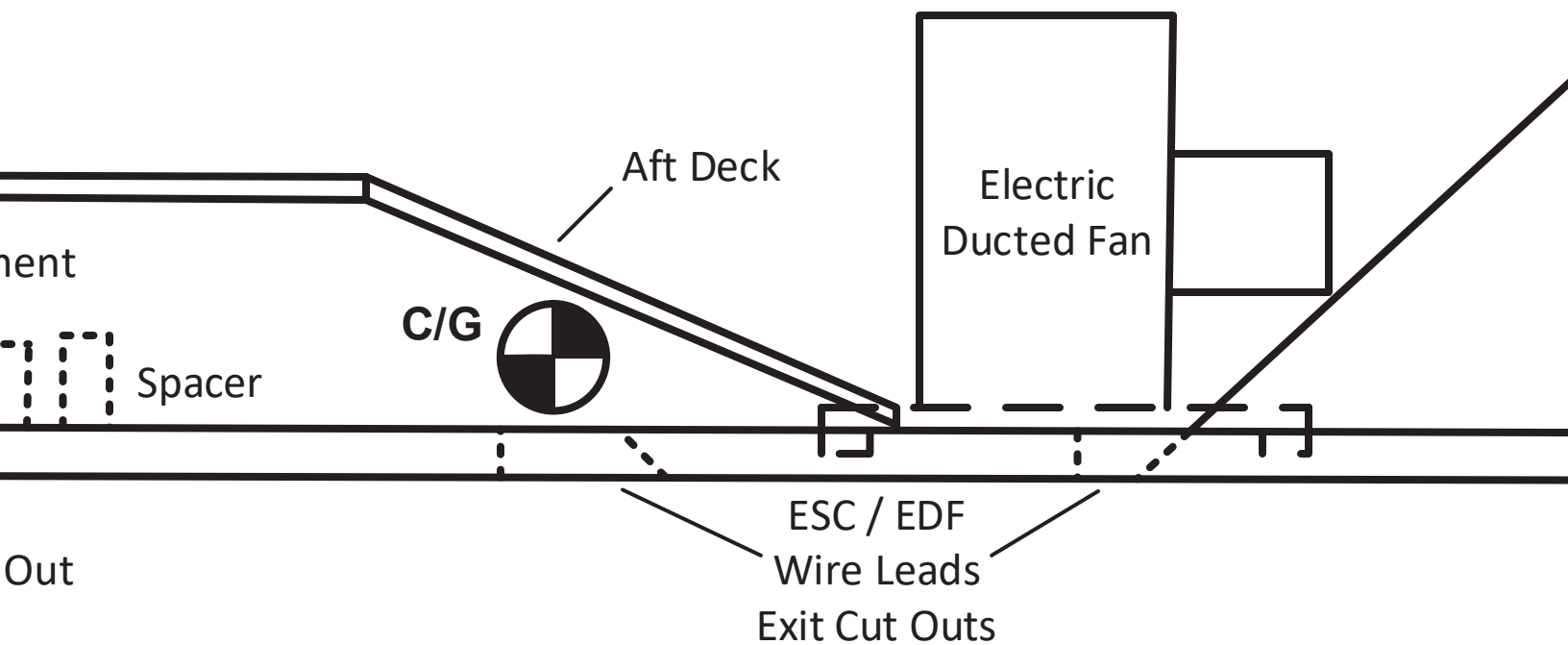
# Center of Gravity



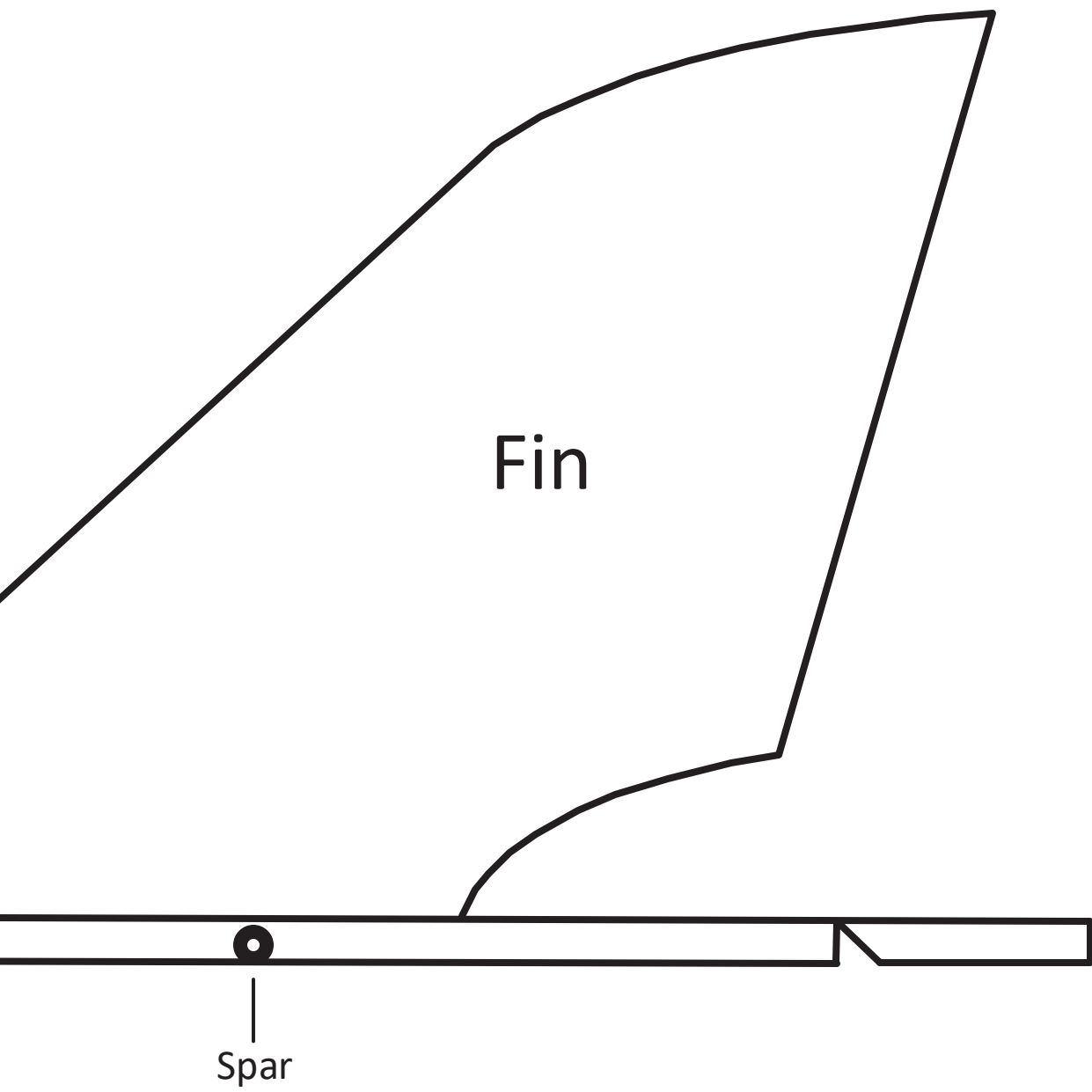




Center



erline



Des
Typ
Win
Len
We
Pow
Bat
Rec
Sen
Spe
Tra

# Blue Dragonfly

**Designed and Drawn by: Tim Bailiff**

Model: Electric Sport Flying Wing

Wing Span: 13½"

Length: 10¼"

Weight: 9.25 ounces

Motor: 50mm EDF (3s version)

Battery: Turnigy 11.1V 850mAh Lipoly

Receiver: Spektrum AR6100e

Servos: Hitec HS-55

Speed Control: Turnigy Plush 30 Amp

Transmitter: Spektrum DX7 V2