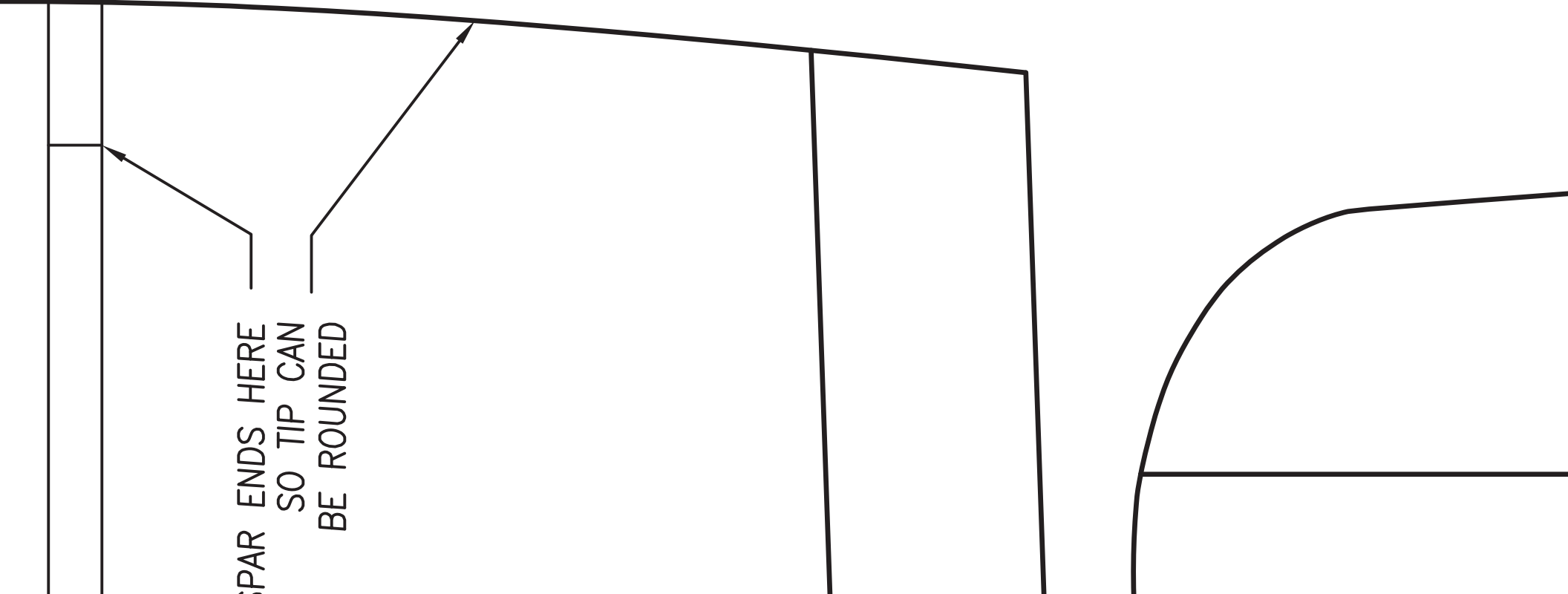
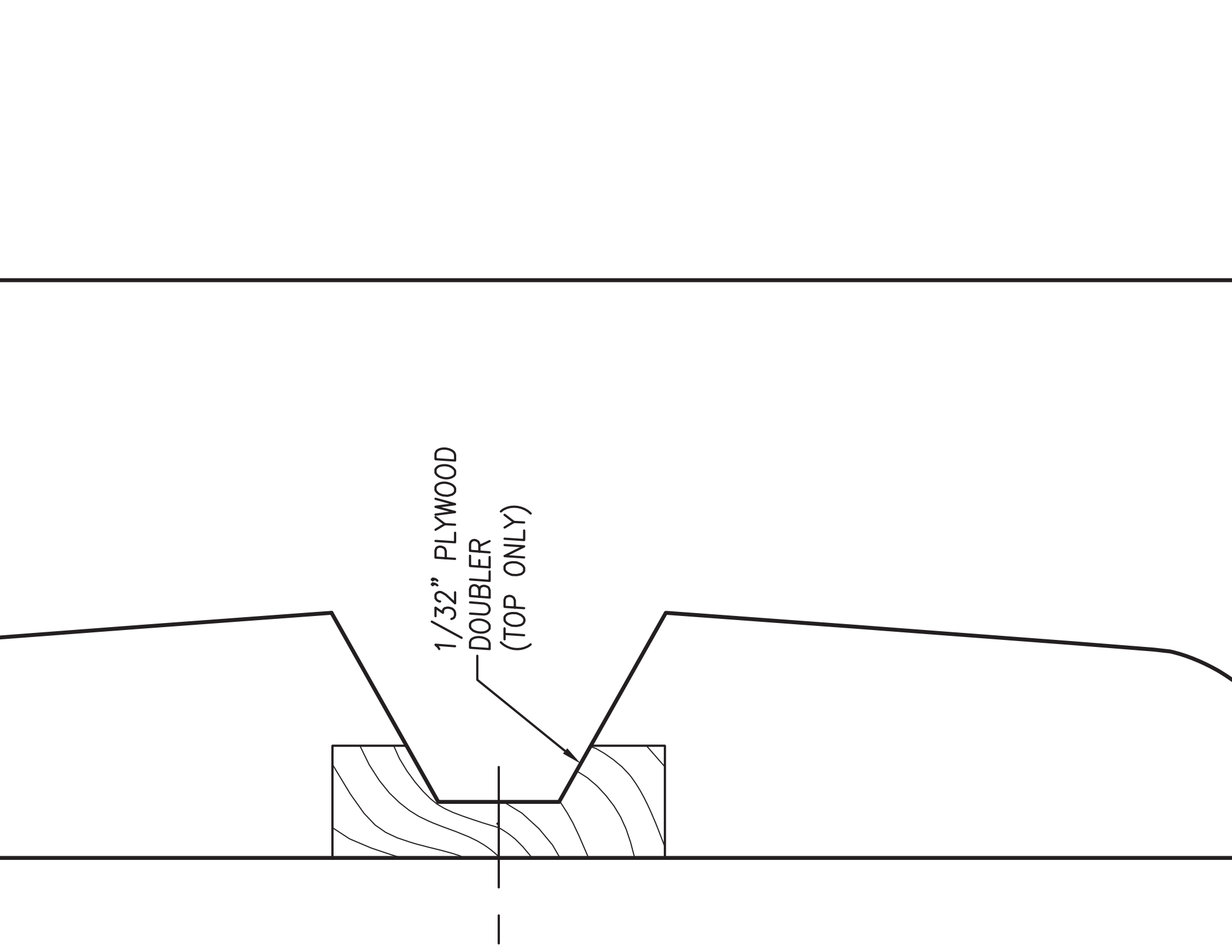


PAR ENDS HERE
SO TIP CAN
BE ROUNDED





1/32" PLYWOOD
DOUBLER
(TOP ONLY)

**PARK PILOT MAGAZINE
GRUMMAN TBF AVENGER**

AN ELECTRIC POWERED R/C PROFILE FOAMIE

WING SPAN: 42 3/8"

LENGTH: 31 7/8"

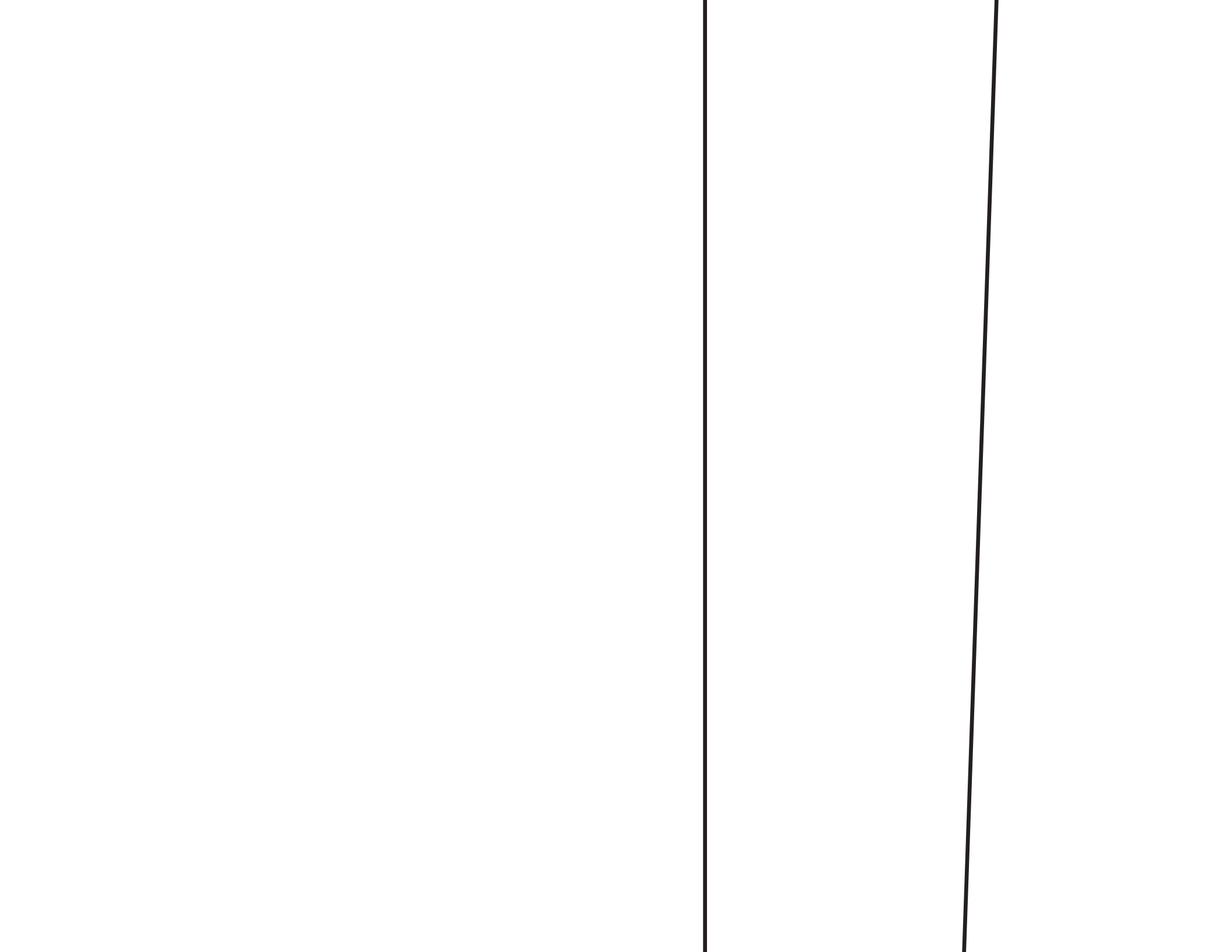
WING AREA 412 SQI

DESIGNED BY: DICK SARPOLUS

CAD BY: BOB KRUGER

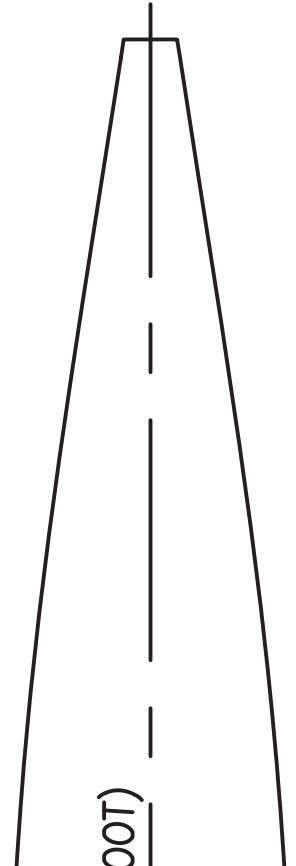
REVISION 1 8 NOV 2014

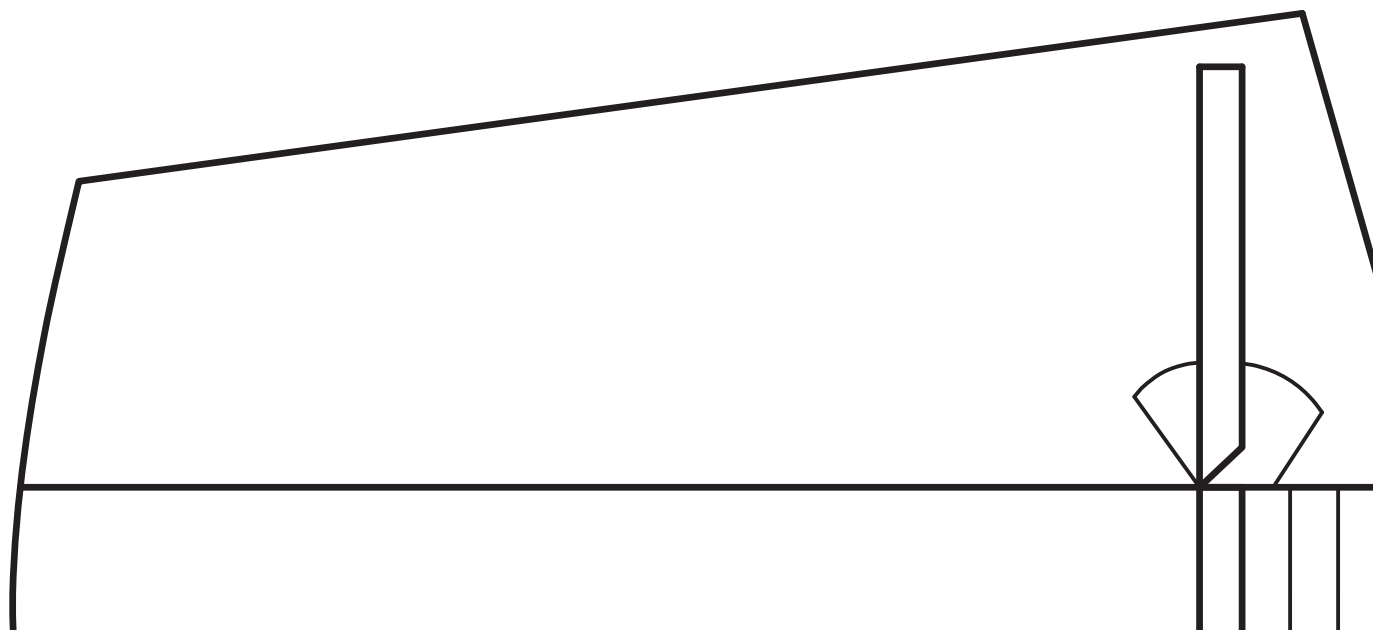
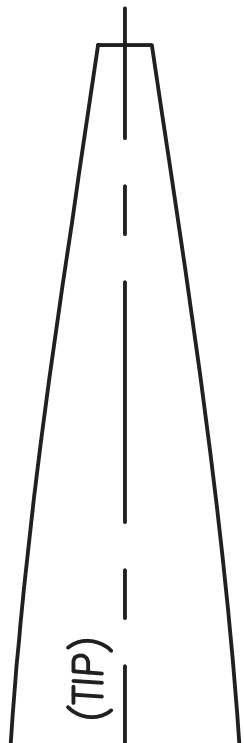
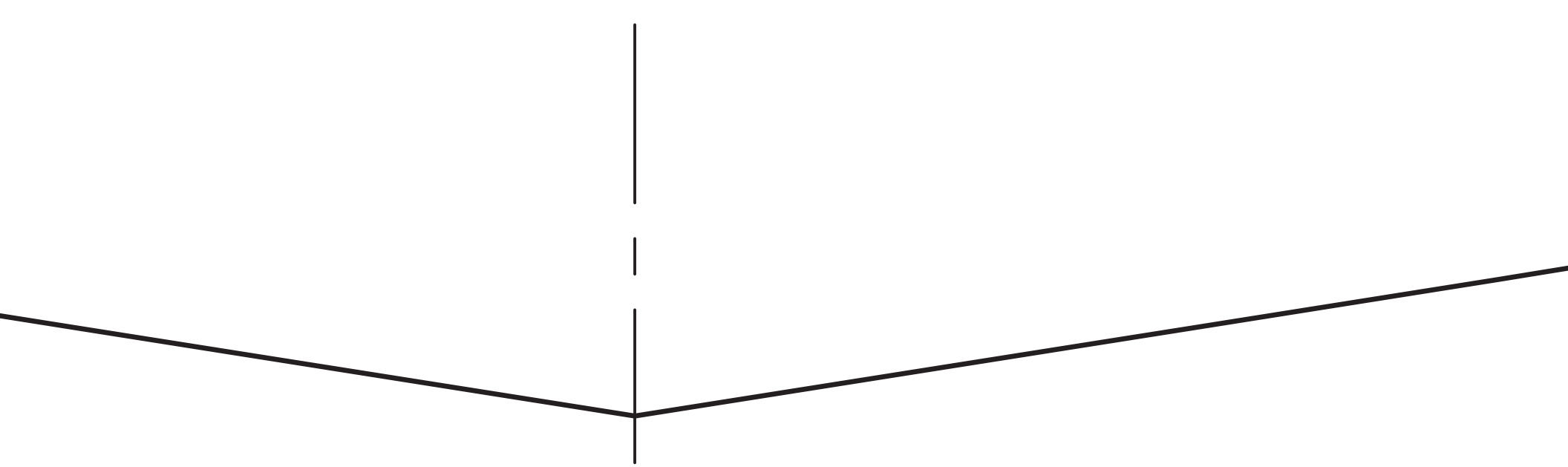
SHEET 1 OF 1

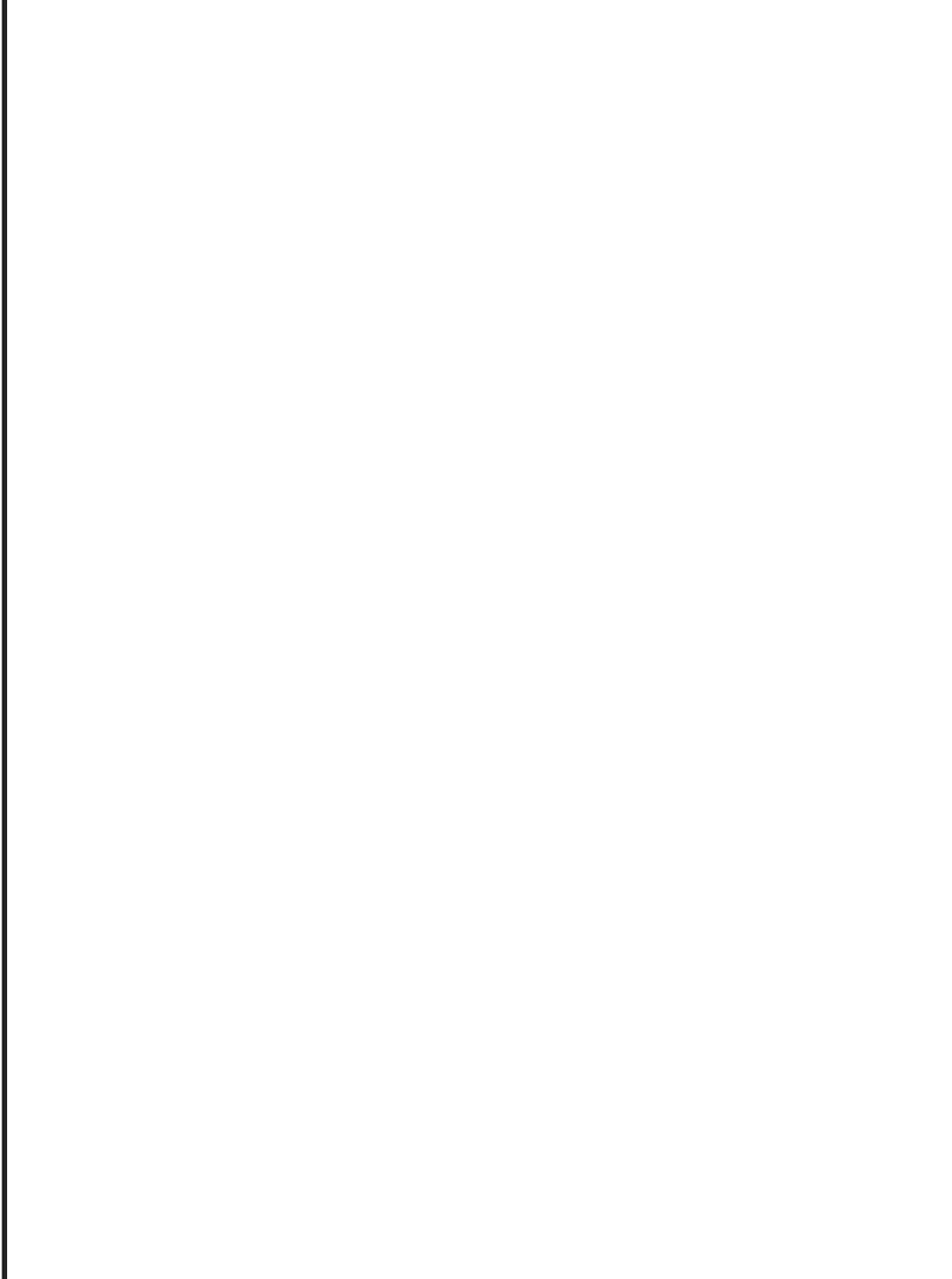
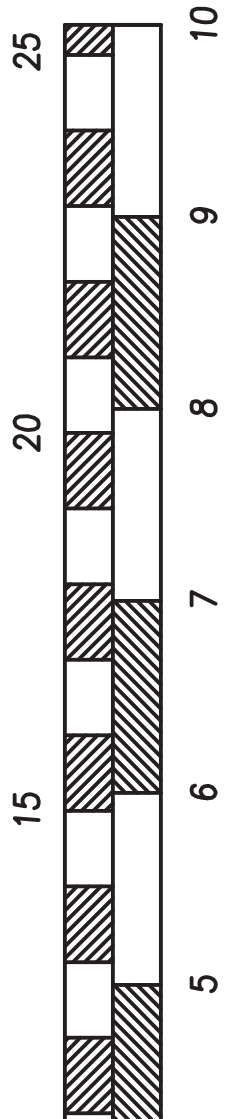


S

00T)

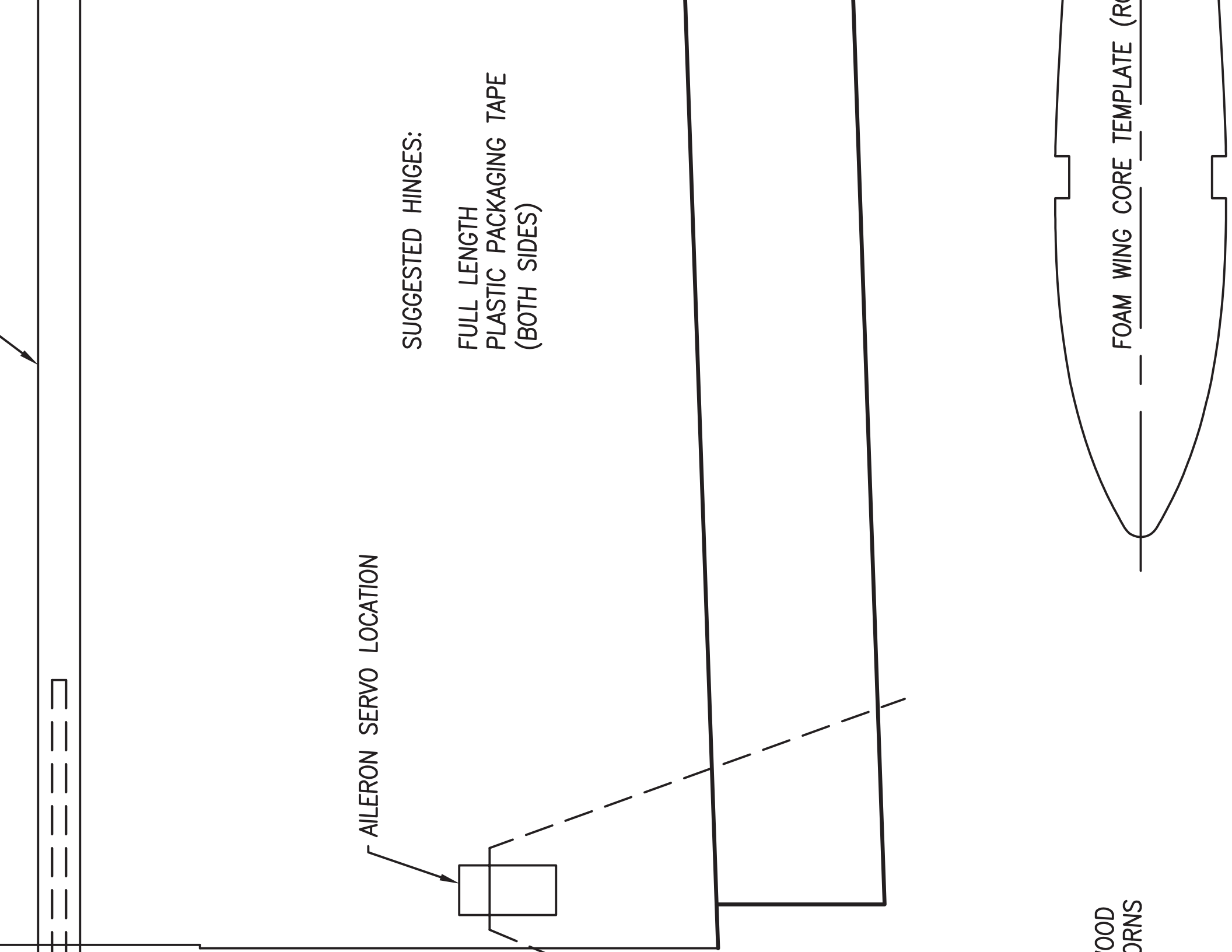






1/8" X 3/8"
BASSWOOD SPARS
(TOP AND BOTTOM)





FOAM WING CORE TEMPLATE

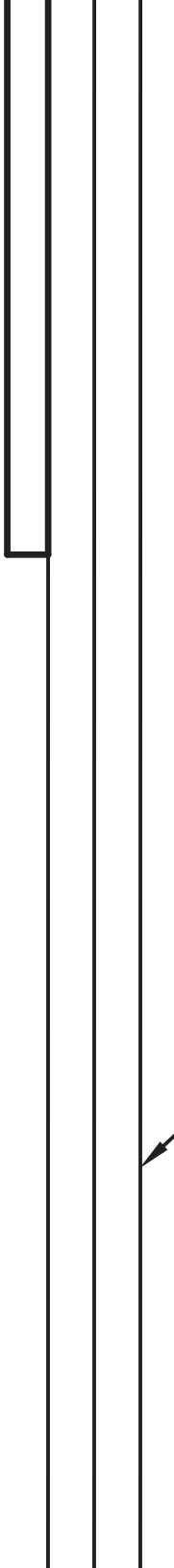
SECTION A-A

1/4" OR 1/4"
FUSELAGE

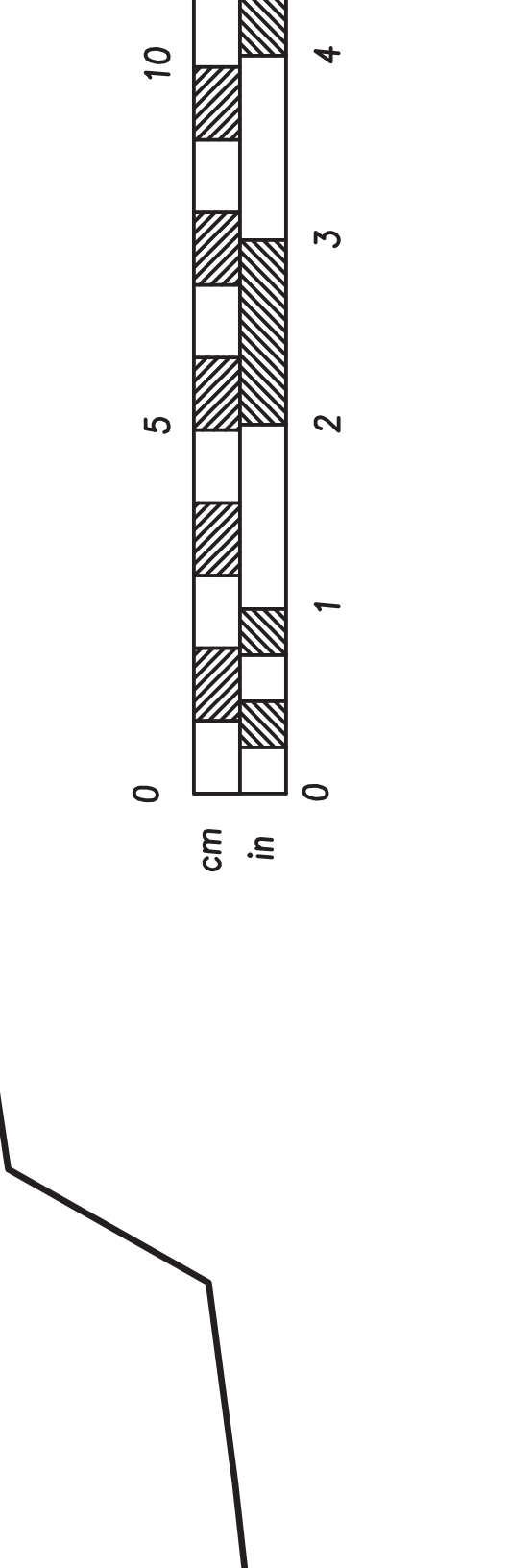
1/4"
BASSWOOD
SIDE PIECE

1/4" X 1/4"
BASSWOOD
SIDE PIECE

1/2"
BASSWOOD
SELAGES
OFFENER

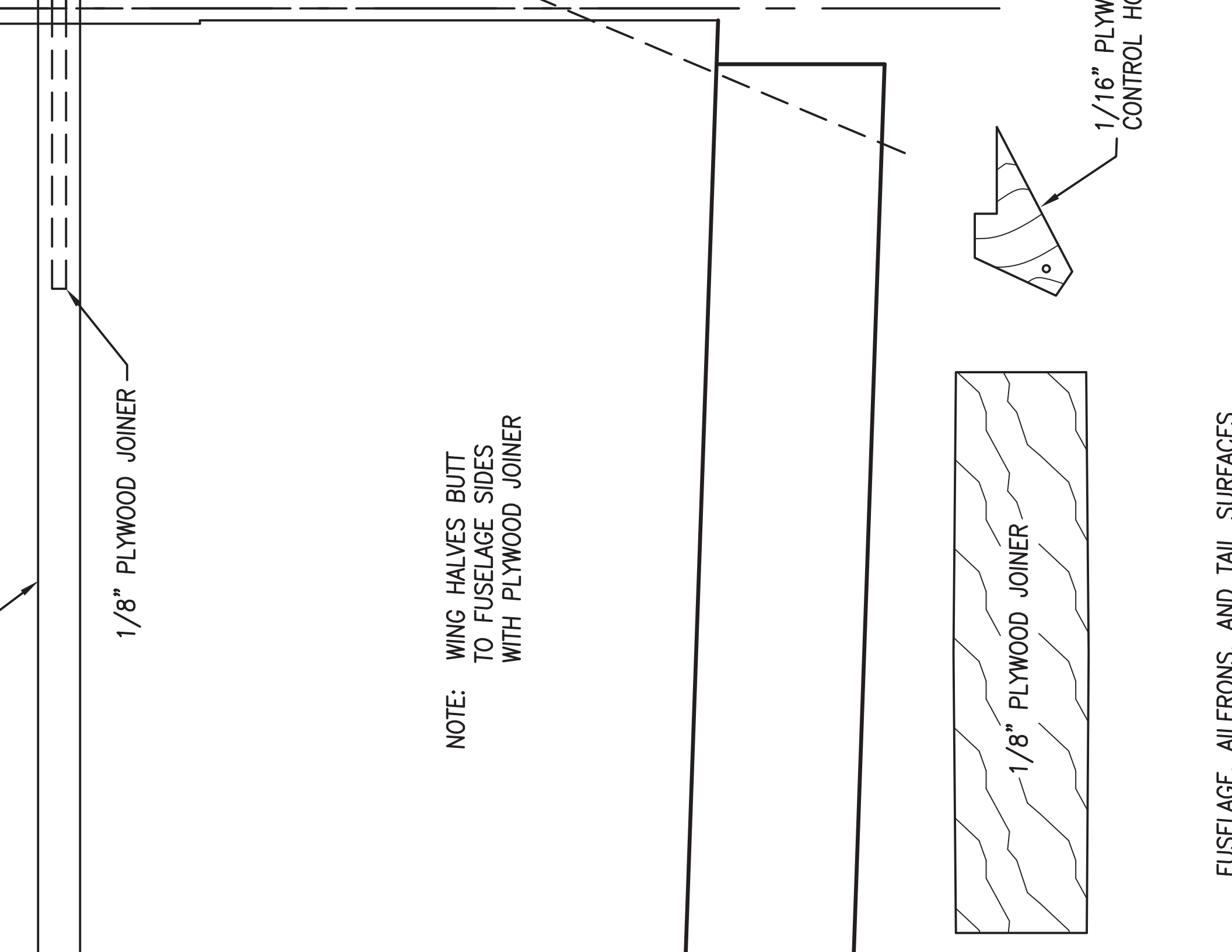


1/4" X 1/2" BASSWOOD
STIFFENER (SEE SECTION A-A)



1/8" X 3/8"
BASSWOOD SPARS
(TOP AND BOTTOM)

RELIEVE WING PANELS
FOR 1/32" PLYWOOD DOUBLER
AS REQUIRED



1/8" PLYWOOD JOINDER

NOTE: WING HALVES BUTT TO FUSELAGE SIDES WITH PLYWOOD JOINDER

1/8" PLYWOOD JOINDER

1/16" PLYWOOD CONTROL HORN

FUSELAGE AIRFRONS AND TAIL SURFACES

FOAM CORE, FIBERGLASS, AND TAIL COPIES
MADE OF 5MM OR 1/4" FOAM FROM:

- BP HOBBIES FOAM
- OR - INSULATION FOAM
- OR - DEPRON
- OR - MIDWEST
- CELLFOAM 88

5MM
FOAM

FOAM WING CORES AVAILABLE FROM:

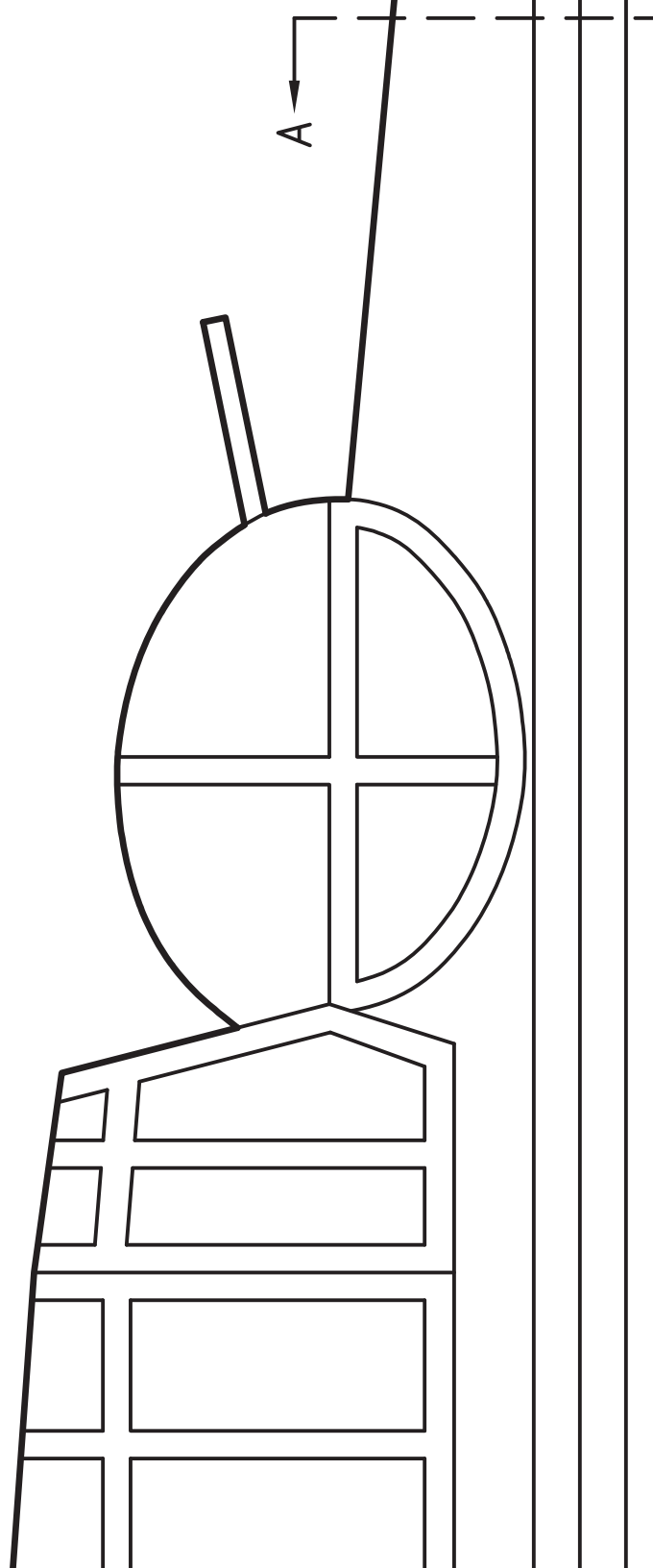
1/4"
BA
SID

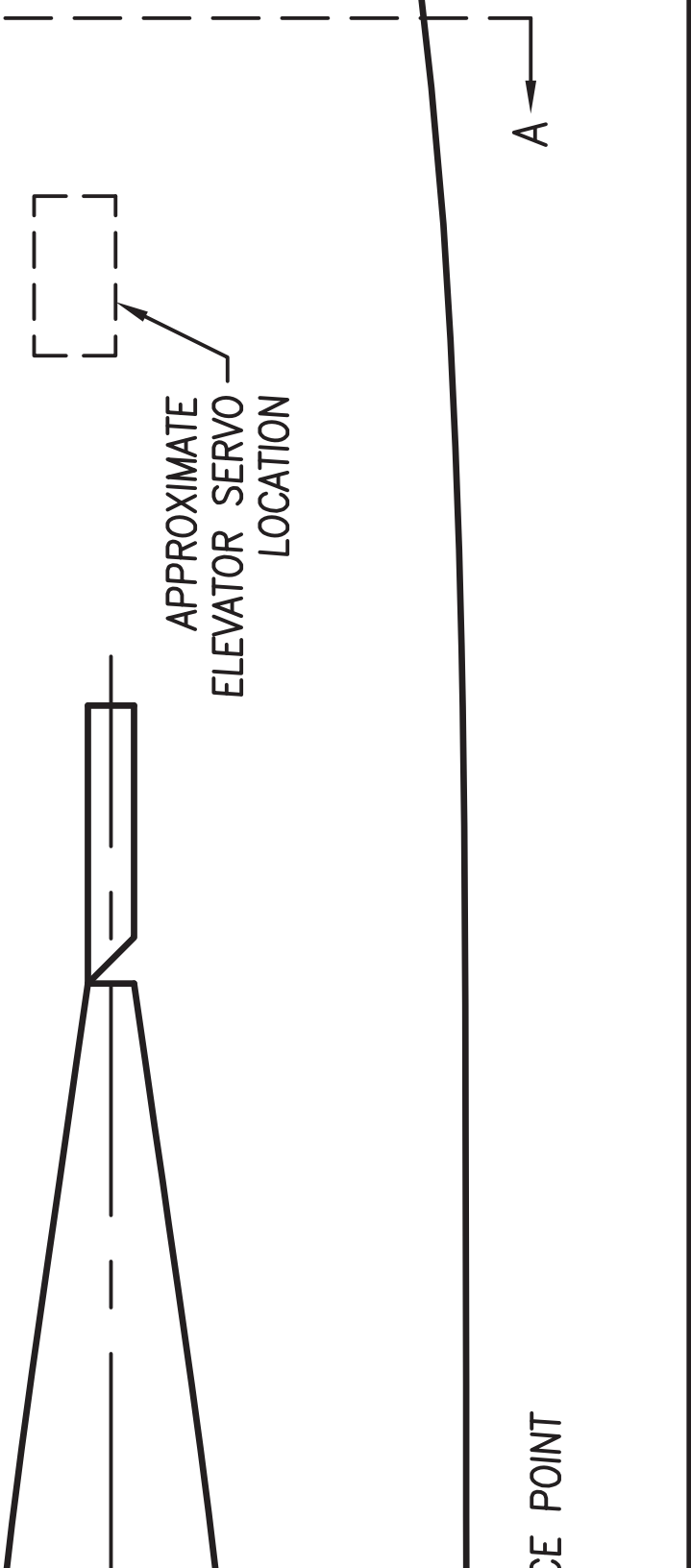
THE CORE HOUSE
34 SWEET ARROW DRIVE
HUMMELSTOWN, PA USA 17036
717-566-3810
philcartier@earthlink.net

1/4"
BAS
FU
STI

OR

ROBIN'S VIEW PRODUCTIONS
PO BOX 68
STOCKERTOWN, PA USA 18083
610-746-0106
robinhunt@rcn.com

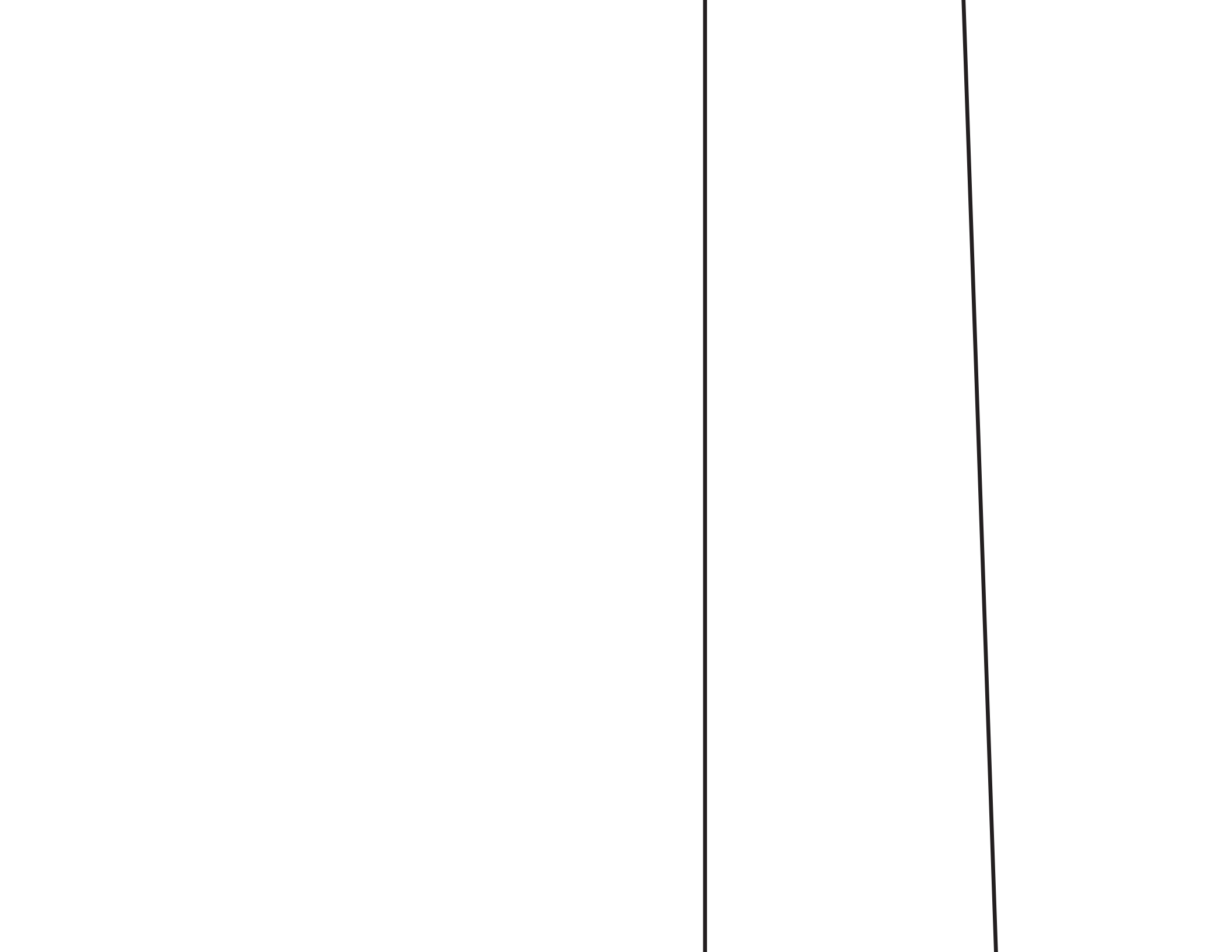


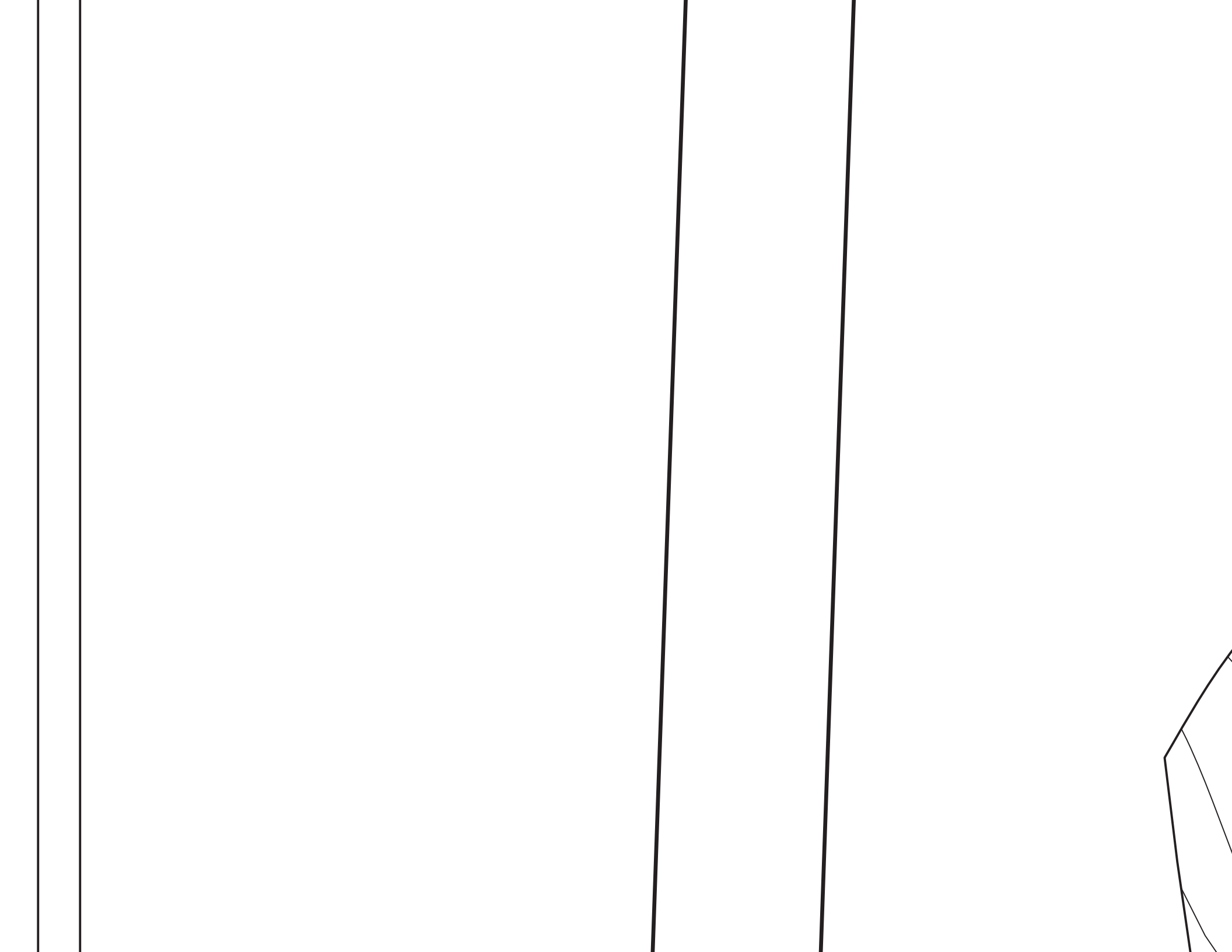


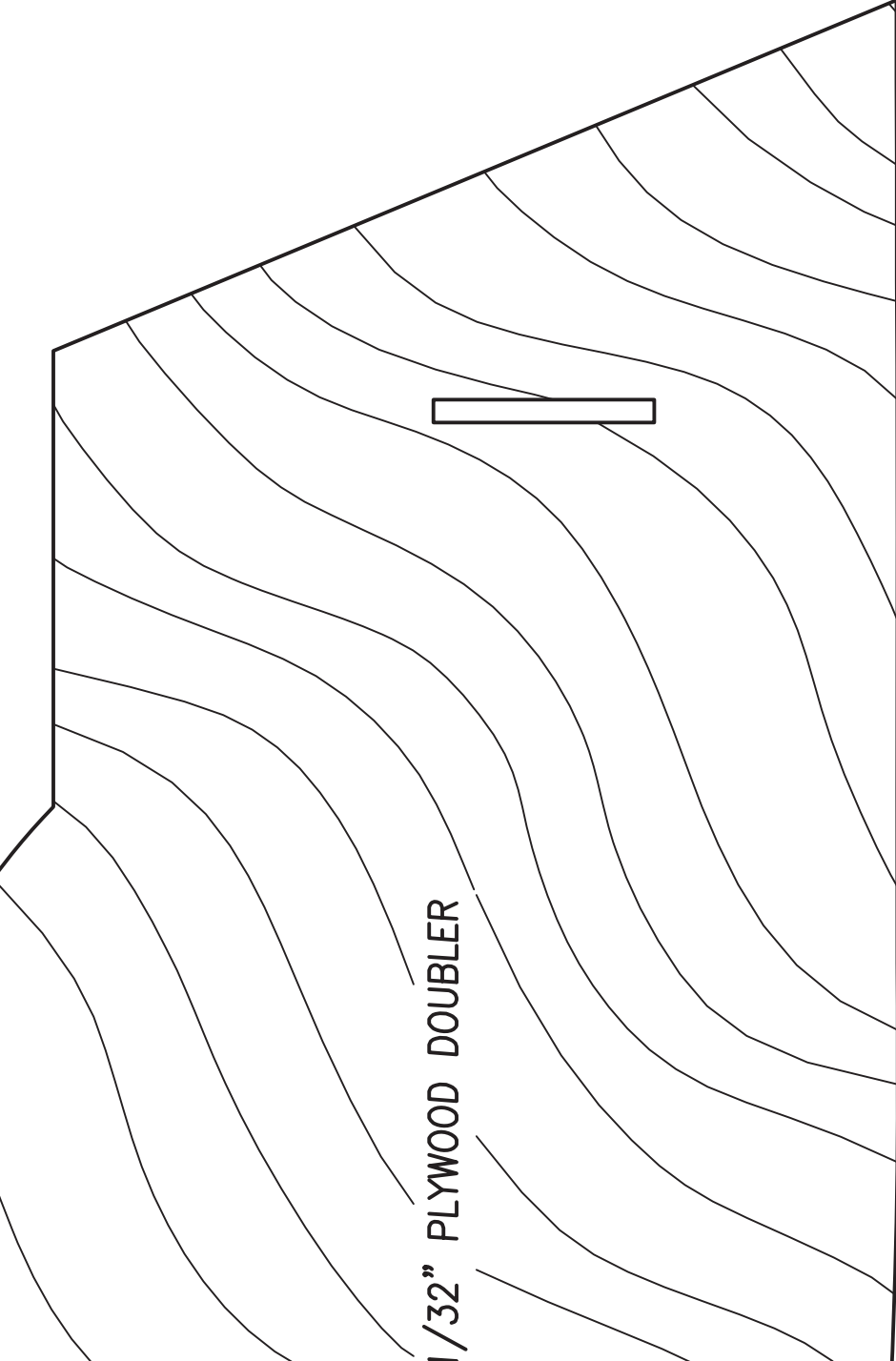
APPROXIMATE
ELEVATOR SERVO
LOCATION

CE POINT

A

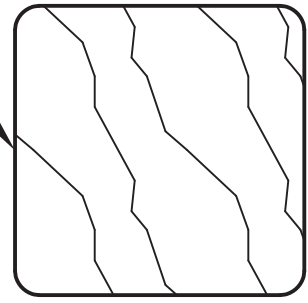




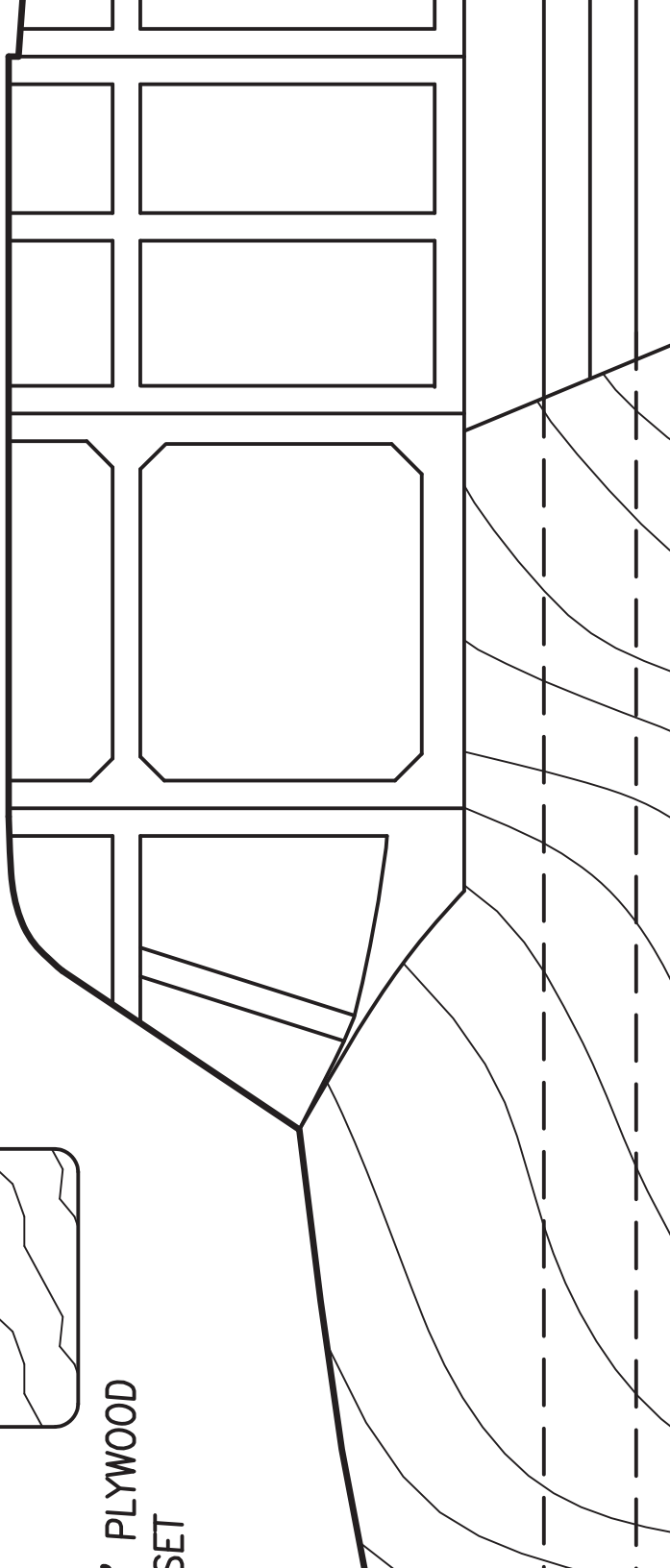


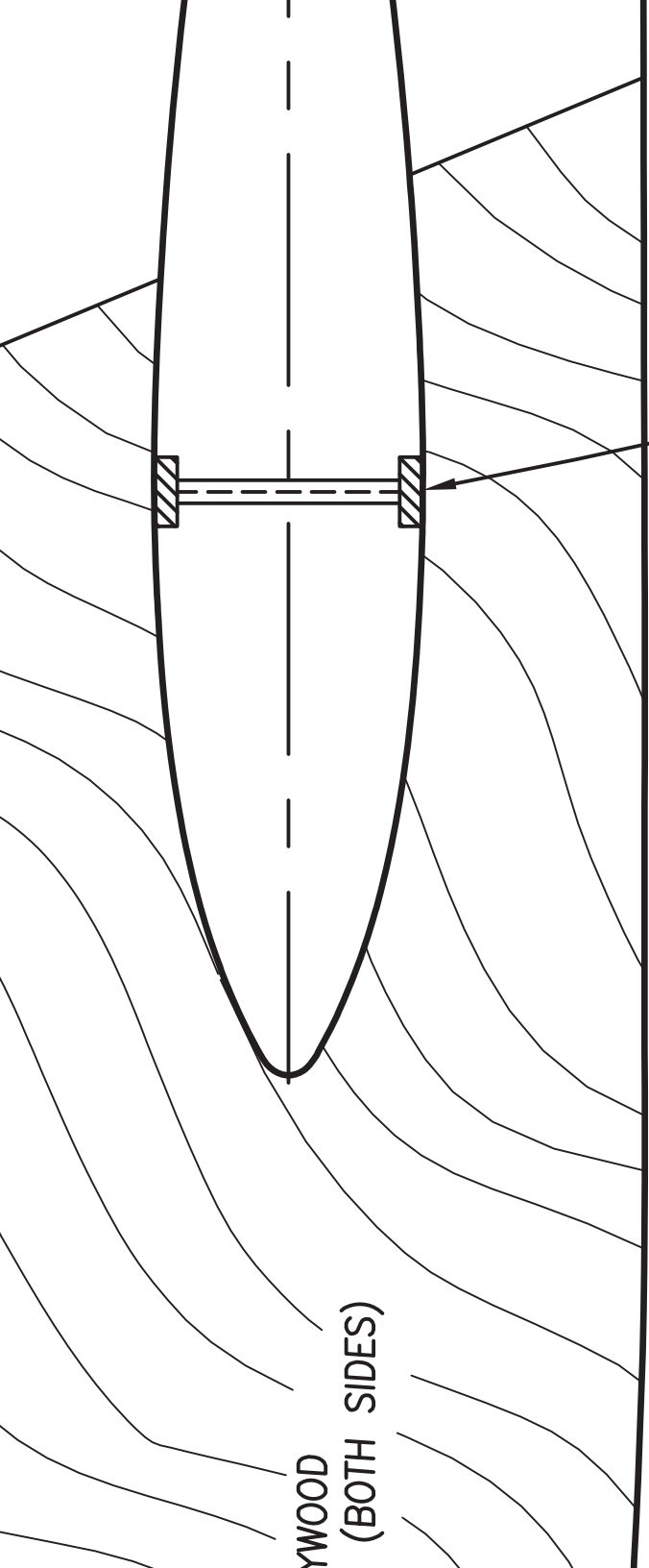
1/32" PLYWOOD DOUBLER

1/8" PLYWOOD
MOTOR MOUNT



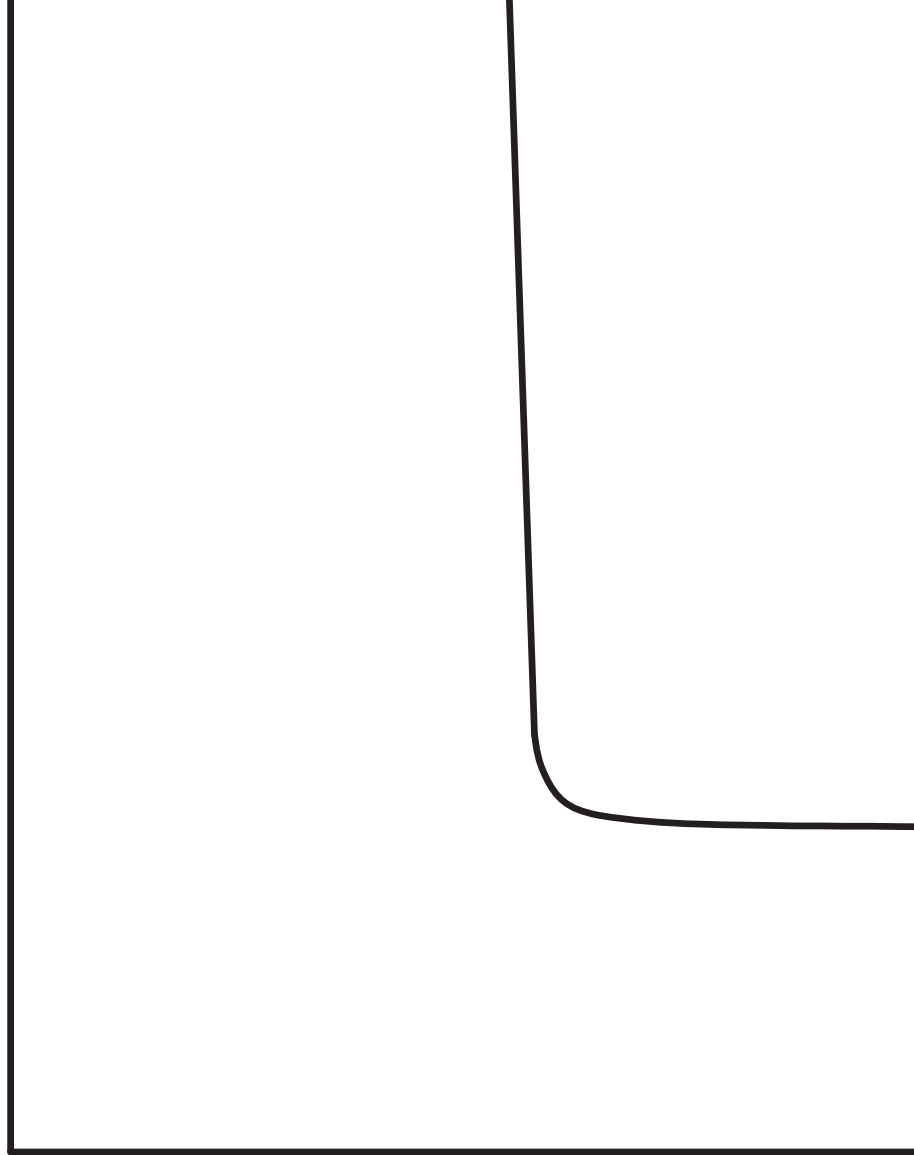
1/8" PLYWOOD
MOTOR MOUNT



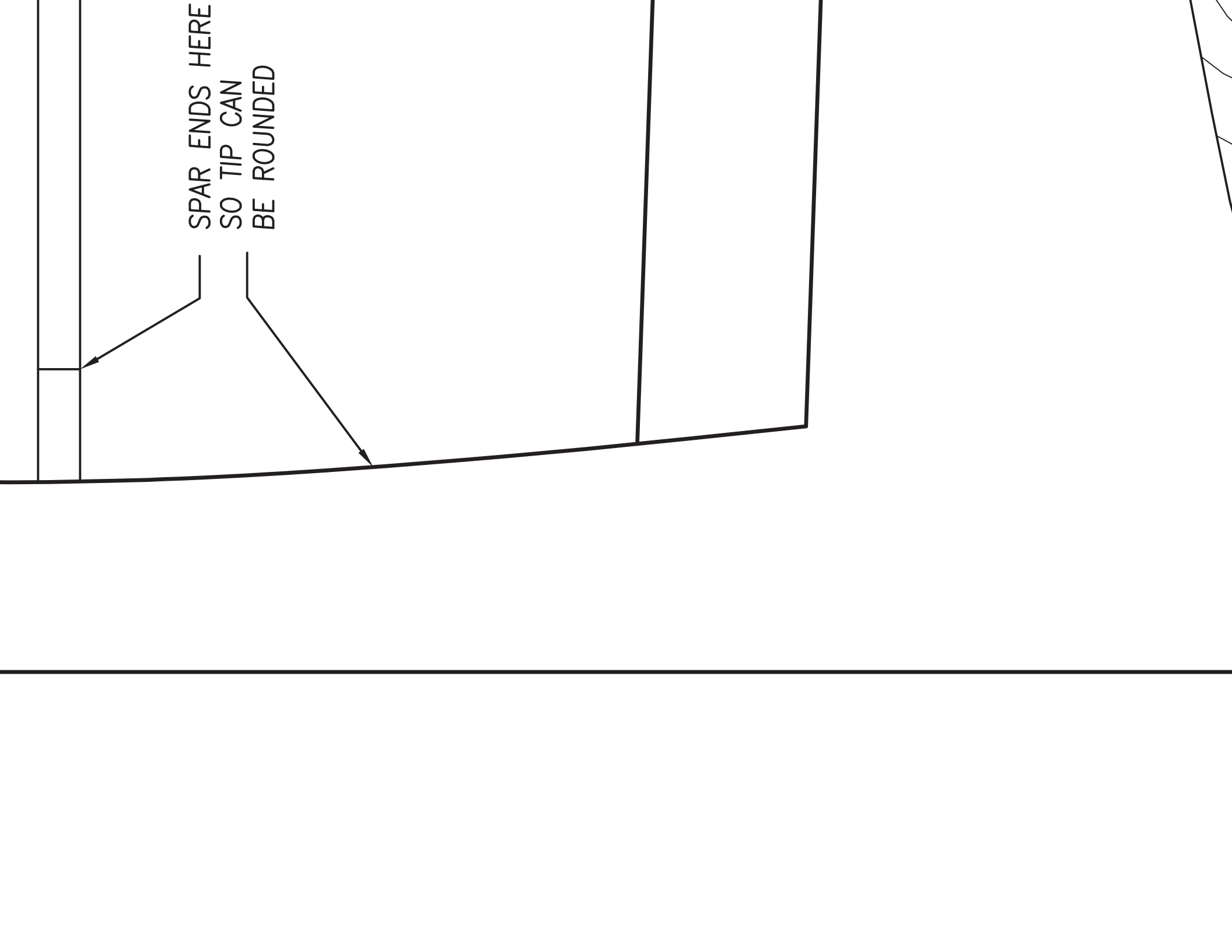


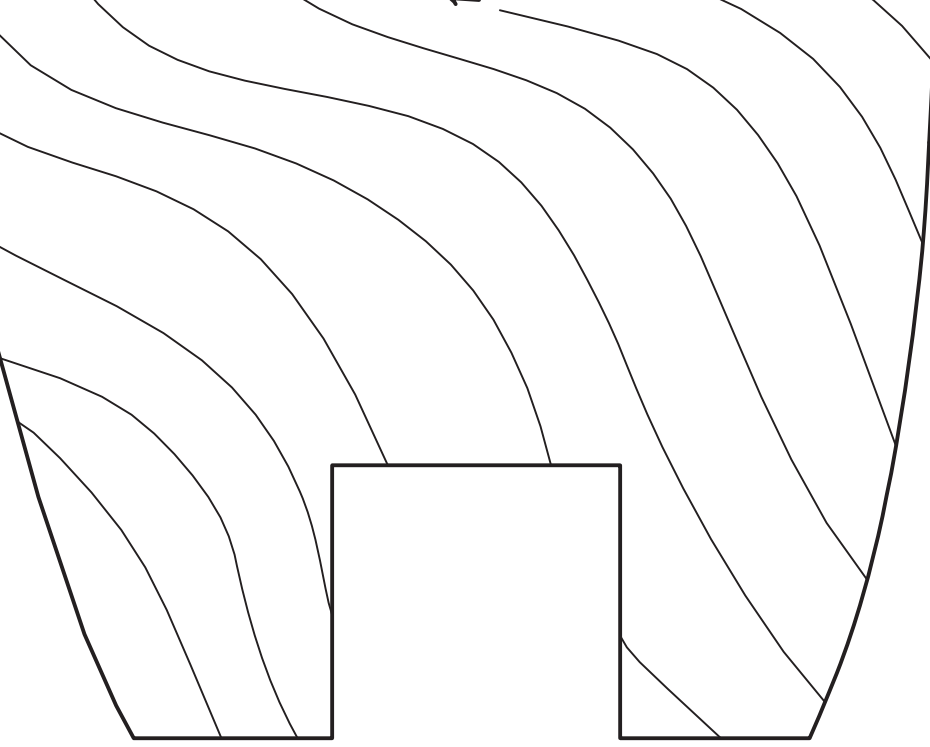
WOOD
(BOTH SIDES)

APPROXIMATE BALANCE

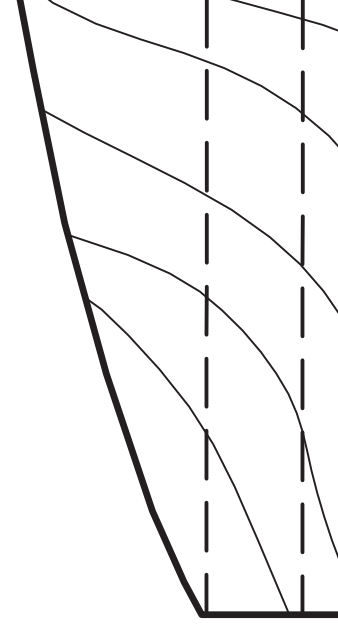
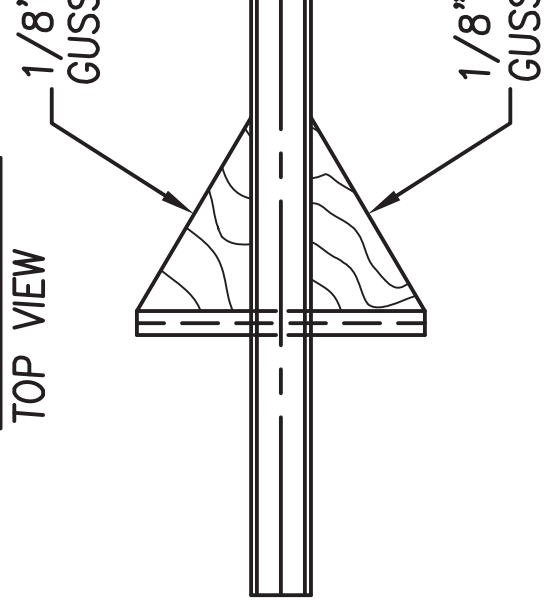


SPAR ENDS HERE
SO TIP CAN
BE ROUNDED





MOTOR MOUNT
TOP VIEW



1/8" PLYWOOD
MOTOR MOUNT

1/8" PLYWOOD
GUSSETS

